

# WILD EARTH

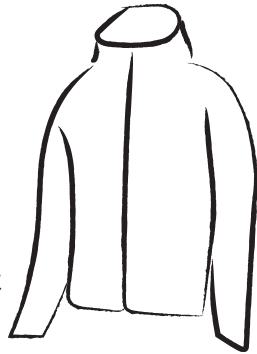
## Camino

# PACKING CHECKLIST



### CLOTHING

- 2 x Quick Dry T-Shirts
- 3 x Quick Dry Undies
- 2 x Quick Dry Shorts
- Leggings
- Lightweight Fleece
- Lightweight Down Jacket
- Thermals (Top and Bottoms)
- Lightweight Hiking Pants
- 2 x Tops (To wear after walking)
- 3 x Socks



### FOR WOMEN

- 2 x Sports Bras
- Jugu Cup

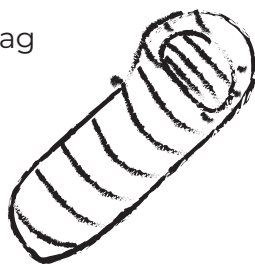
### FOOTWEAR

- Hiking Boots
- Camp Sandals/ Tevas



### SLEEP SYSTEM

- Lightweight Sleeping Bag
- Silk Liner
- Travel Pillow
- Eye Mask/ Ear Plugs
- Earplugs



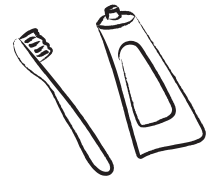
### LUGGAGE

- 28L-30L Hiking Backpack
- Drybags
- Hip Pack/ Waist Pack
- Stuffable Day Pack
- Waterproof Pack Cover
- Dirty Clothes Bag



### HYGIENE/TOILETRIES

- Biodegradable Body Wipes
- Travel Towel
- Toothbrush & Toothpaste
- Deodorant
- Personal Medication
- Toilet Paper/ Trowel



### FIRST AID

- Hiking First Aid Kit
- Blister Wool
- Bug Repellent
- Sunscreen
- Pocket knife
- Salt (For leeches)



### TECH

- Power Bank
- Solar Charger
- GoPro
- Rechargeable Headlamp
- EU Travel Adaptor



### EXTRAS

- Binoculars
- Hiking Poles
- Book/ Cards/ Puzzle Book/ etc.